



**Strongest Built
Australian Made
Lifetime Warranty**

**PN: 8S71SY
NB6S71SY
NBS71SY**



Fitting Guide & Owners Manual SUBARU FORESTER

07/18 ON - Incl. 07/21 ON

TYPE 8, 63mm SERIES 2 NUDGE BAR & 76mm NUDGE BAR
VEHICLE FRONTAL PROTECTION SYSTEM (VFPS)
FOR AIR BAG & ADR COMPLIANT VEHICLES

Index

Pages 3-5

ECB's Benefits

Product Care

Pages 6-7

Stage 1 - Vehicle preparation

Stage 2 - Remove Headlight washer covers

Stage 3 - Remove Splash guards

Stage 4 - Remove bumper cover

Stage 5 - Remove bumper infill steel bracket

Stage 6 - Trim bumper infill

Pages 8-9

Stage 7 & 8 - Mount fitment

Stage 9 - Camera

Stage 10 - Inner bumper

Stage 11 - Refit bumper

Pages 10-11

Stage 12 - Trim outer cover

Stage 13 - Protection bar fitment

Stage 14 - Reconnect camera

Final Checks & Installation Kit

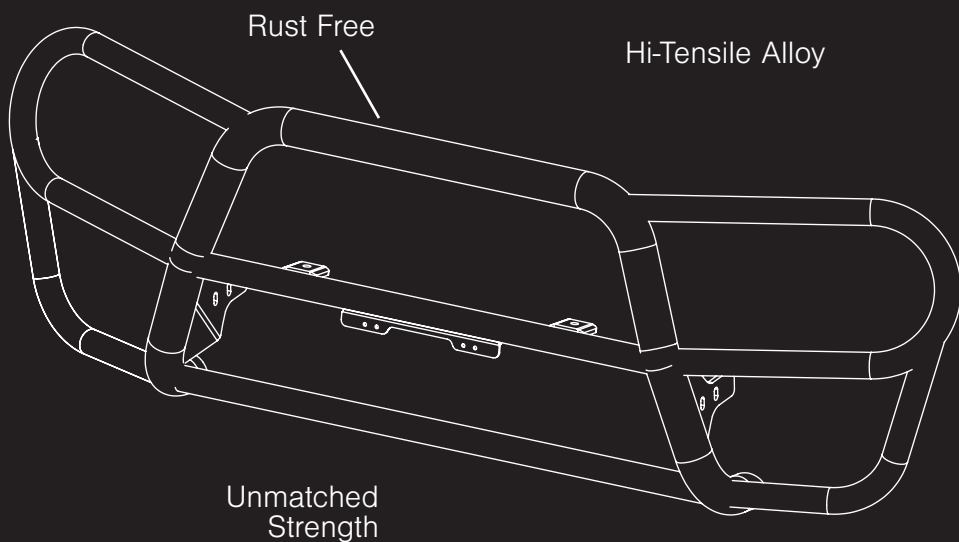
Pages 12-13

Finished Product

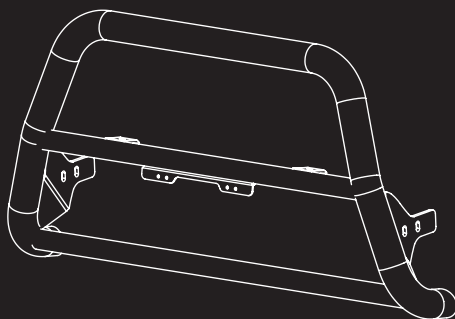
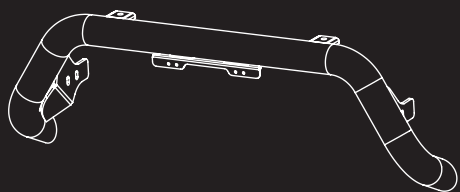
Pages 14-15

Warranty Registration

The Features of ECB



Industry Leading
Metal Thickness



Fully Welded
Construction

ECB's Benefits

Built to Perform - Not to a Price

ECB are proud to claim that their channels are not jigsaw puzzles that are bolted together, or even multiple sections welded together. Where any welding is required, it is done to the highest standards by qualified welders, not machines.

Anti-Corrosive Nature of Alloy

The composition of ECB's alloy has a very high resistance to corrosion. Rust not only looks unappealing but greatly reduces the strength of the metal. Rust can and will weaken the structural integrity of a steel bullbar effectively rendering it useless over time.

Australian Made

Established in 1971, we utilise decades of experience designing, engineering and building products in Australia to suit Australian conditions. We can ensure the best quality controls and help support the local economy and employ over 90 proud Australians.

Weight Saving Benefits

An ECB alloy bullbar is typically half the weight of a steel bullbar. Unnecessary suspension upgrades are not required. The reduced weight also contributes to increased fuel economy and less wear and tear on tyres, suspension and braking components.

Welds That Work

ECB uses only the strongest welds and welding techniques to ensure every product is as structurally sound as possible. MIG (Metal Inert Gas) welding techniques are employed ensuring the welds are as thick as the thickest section of alloy's being joined together.

Lifetime Warranty

ECB provide a lifetime warranty and consumer guarantee on all of our manufactured products. This guarantee highlights the confidence in our ability and provides complete peace of mind for your purchase for the lifetime you own your vehicle.

Product Care

Polished Products

Being a premium mirror polished finish, regular maintenance will be required to keep that iconic ECB shine. We recommend using our own brand of Aluminium Polish. This formula has been tried and tested and in our opinion is the world's best standard.

Directions: Apply a small quantity of Aluminium Polish to a clean soft cloth and rub the metal surface. The longer the rubbing the brighter the surface becomes. Wipe off Aluminium Polish with clean soft cloth. Also suitable for motorised buffing machines. **Note: There are more specific details on the polish bottle. Please read before use.**

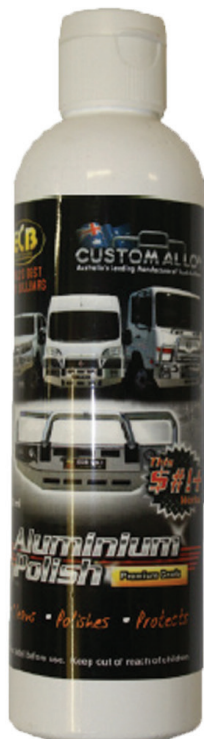
Powdercoated Products

Our powdercoated finishes are very low maintenance. Infact there is actually very little you will ever need to do for this product. Just clean it as you would your car and it will stay looking good as new.

ECB Aluminium Polish

When you're looking for that showroom finish look for your polished automotive products, you can depend on the no compromise quality of East Coast Bullbars Aluminium Polish. This specifically designed product is the best polish available and we guarantee that this \$#!+ works. Within our decades of manufacturing polished alloy products we have trialed a large range of different polishes on the market and believe without a doubt that nothing beats the finish quality of East Coast Bullbars Aluminium Polish.

East Coast Bullbars Aluminium Polish is excellent for use by hand and is ideal for polished bullbars, nudge bar and stainless steel products. This polish will clean, polish and protect your product from the elements whilst bringing your products back to that showroom finish look.



8S71SY, NB6S71SY, NBS71SY

Stage 1

- Test drive vehicle to ensure all driver assists are correctly working and to gauge effectiveness. Park on a flat level surface.
- Apply parking brake and lift bonnet.
- Unwrap ECB Protection bar and disconnect mounts. Discard bolts.
- Ensure these instructions are left with the vehicle owner / operator.



Stage 2

- Remove headlight washer covers from bumper. Pull headlight washer out and unclip top clip from washer stalk.

NOTE: Take care not to over extend the washer stalk.



Stage 3

- Remove plastic engine splash guard from under vehicle, seventeen (17) push pull clips and four (4) 12mm head bolts.



SUBARU FORESTER 08-21on

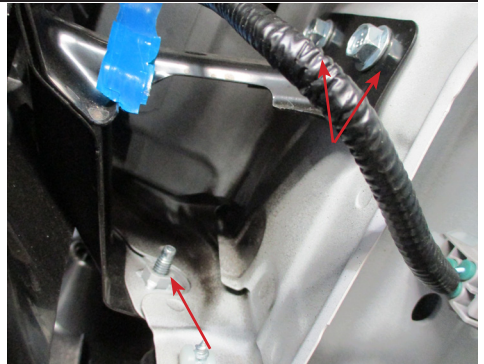
Stage 4

- Remove six (6) plastic push pull clips from top grille, ten (10) plastic push pull clips from under bumper and one (1) plastic push pull clip (per side) from bumper wing in wheel arch.
- Unplug fog lights, washer lines and camera if fitted.
- Carefully pull sides of bumper out from vehicle then forward to release the support clips on guard and under headlight.



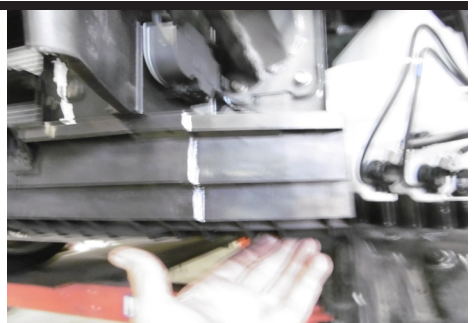
Stage 5

- Remove steel mount under the end of chassis rail, four (4) 10mm head bolts (per side).
- Discard mount.



Stage 6

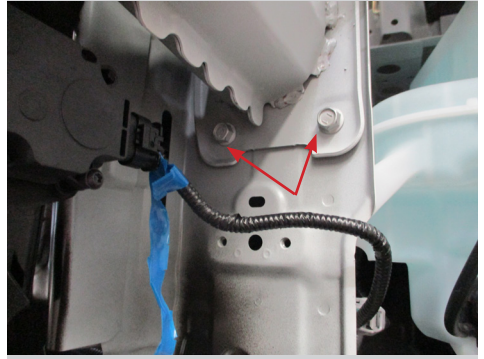
- Trim 110mm from end lower honeycomb (per side) under shutter grille.
- When reinstalling to vehicle further may need to be trimmed to fit around steel mounting bracket.



8S71SY, NB6S71SY, NBS71SY

Stage 7

- Remove two (2) lower bolts (per side) from end of chassis rail.

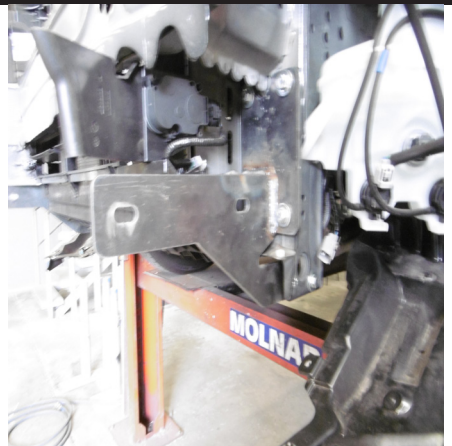


Stage 8

- Fit ECB steel mounting bracket (supplied) onto end of chassis rail using two (2) M8 x 1.25 x 35mm bolts, spring washers, flat washers and 6mm spacers (supplied).
- Using steel mounting bracket as a guide, drill lower hole in mount and front hole in tie down point to 8.5mm.

Blow filings clear and treat all exposed metal with a rust inhibitor.

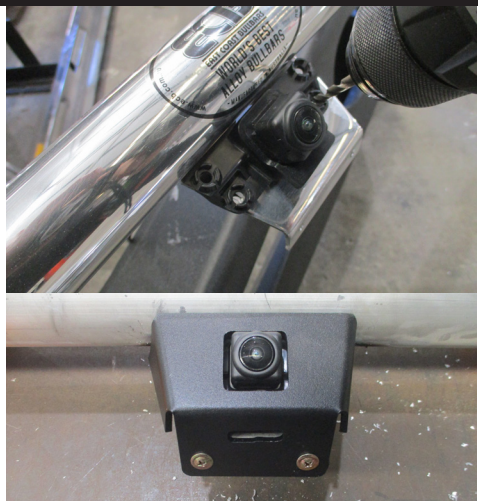
- Install one (1) M8 x 1.25 x 35mm bolt, spring washer, flat washer, 6mm spacer, flat washer and nut (supplied) into drilled hole in chassis rail. Install two (2) M8 x 1.25 x 30mm bolts, flat washer, spring washer and nuts (supplied) into holes in tie down points.
- Align mounts to suit the protection bar (alloy mounting to inside of steel mounts).



SUBARU FORESTER 08-21on

Stage 9

- Remove camera and housing from rear of grille.
- Trim bottom of camera housing (MY21) and top of camera housing on MY19 and relocate into protection bar. Align camera on mounting bracket and drill two 5mm holes. Secure with M5 x 20mm bolts, M5 washers and M5 Nyloc nuts (supplied).
- Remove wiring clip from headlight panel for extra length.
- Place outer housing over mount, secure with 8g self drilling screws (supplied).



Stage 10

- Using the contours of the bumper, mark and cut lower bumper for mounts to exit the vehicle.

NOTE: there are two layers of the bumper at this point. The rear cut is hidden by the front skin. The front skin can be removed to cut the rear bumper and refitted after the bumper is refitted to the vehicle to allow the cut to be more accurate.

CAUTION: The cut in the front skin is dependant on the fitment of the mounts to the chassis rail and protection bar mount.



Stage 11

- Refit bumper to vehicle in reverse of stage three.
- Do not fit engine splash cover or front side covers at this stage.



8S71SY, NB6S71SY, NBS71SY

Stage 12

- Trim and refit lower outer covers .



Stage 13

- Install protection bar onto steel mounting brackets using M10x1.5x40mm bolts, M10 flat washers, M10 spring washers and M10x1.5 nuts.
- Align protection bar to vehicle.
- Tighten all bolts.
- Refit engine splash guard and trim around steel mounting bracket.



Stage 14

- Reconnect camera and test .

Final Checks & Installation Kit

Ensure Number Plate is Clearly Visible

Note: When fitting/refitting the licence plate to the vehicle, ensure there is no obstruction to licence plate vision in accordance with local authorities. If required relocate licence plate to an alternate location.

Further VFPS Notes

1. Do not attach VFPS to the vehicle using anchorages not intended for this purpose (e.g. engine mounting bolts).
2. Do not use this product for any vehicle make or model, other than those specified by the VFPS manufacturer.
3. Do not remove the plaque or label from the VFPS.
4. Do not modify the structure of the VFPS in any way.
5. No accessory or fitment should project forward of the VFPS forward profile.
6. **Ensure these instructions are left with the vehicle owner and/or operator.**

Important Information

Periodically check bolts and nuts for correct tightness, especially if traveling on rough roads.

Installation Kit

1 - Pair steel mounting brackets	4 - M8 x 1.25 x 30mm Bolts
1 - Camera cover (NBS70_VA3A)	14 - 5/16 x1 Flat washers
6 - Round 25 x 10 x 6 spacer washer(25x10x6MS)	10 - M8 Spring washers
4 - M10 x 1.5 x 40mm Bolts	6 - M8 x 1.25 Nuts
8 - M10 Flat washers	2 - M5 x 20mm Bolts
4 - M10 spring washers	4 - M5 Flat washers
4 - M10 x 1.5 Nuts	2 - M5 Nyloc nuts
6 - M8 x 1.25 x 35mm Bolts	2 - 8g x12 Pk self drilling screws

Finished Product



Warranty Registration

Contact Details

Name: _____

Address: _____

Product: **8S71SY, NB6S71SY, NBS71SY** _____

Email: _____

Phone: _____

Work Order Number: _____

You can find this on the silver label
of your ECB product.

By submitting this registration you automatically subscribe to ECB's mail outs. You
can unsubscribe at any time.

Register Online

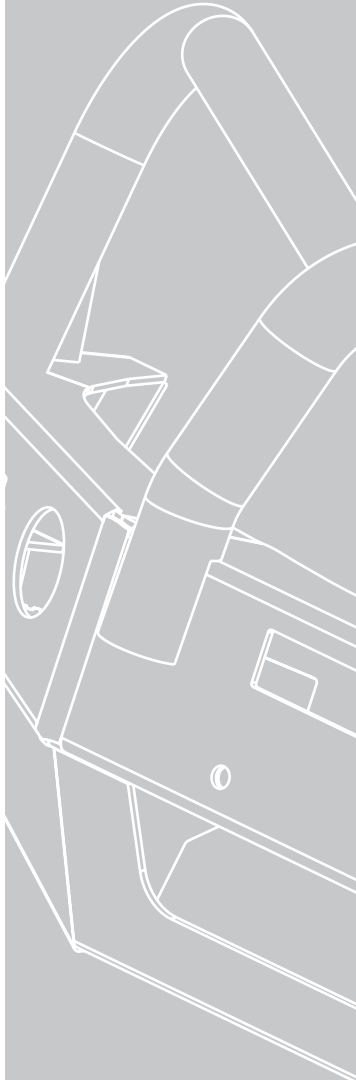
For online registration please go online to www.ecb.com.au/warranty-registration
If you have any questions please contact our national office on 1800 069 145 or
www.ecb.com.au.



PN: 8S71SY, NB6S71SY, NBS71SY
Please post to PO Box 122,
Margate QLD 4019

This page has been intentionally left blank

REPLACES: N/A
REVISED: 21.12.21



Strongest Built Australian Made Lifetime Warranty

1800 069 145
www.ecb.com.au

29 Snook St, Clontarf QLD 4019
PO Box 122, Margate QLD 4019